



Massachusetts eHealth Institute

Mass Health Data Consortium
June 22, 2011

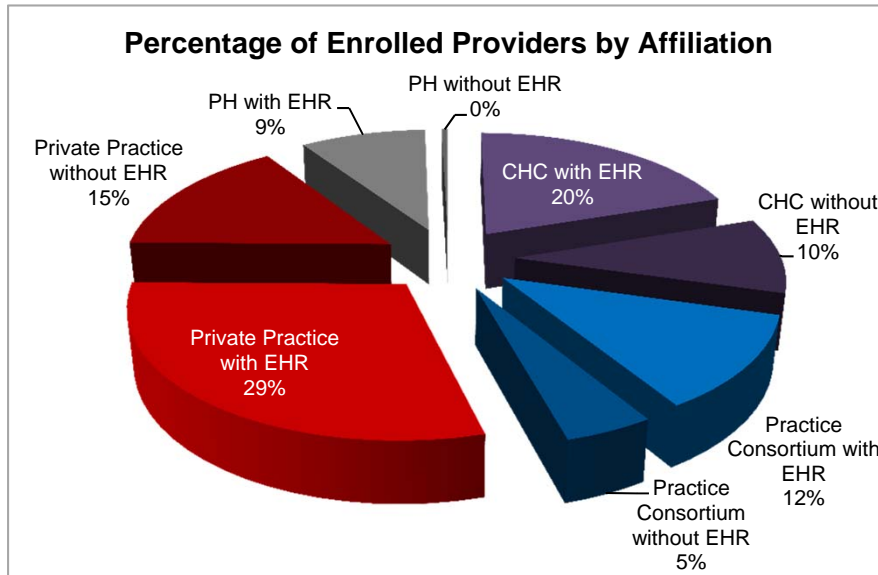
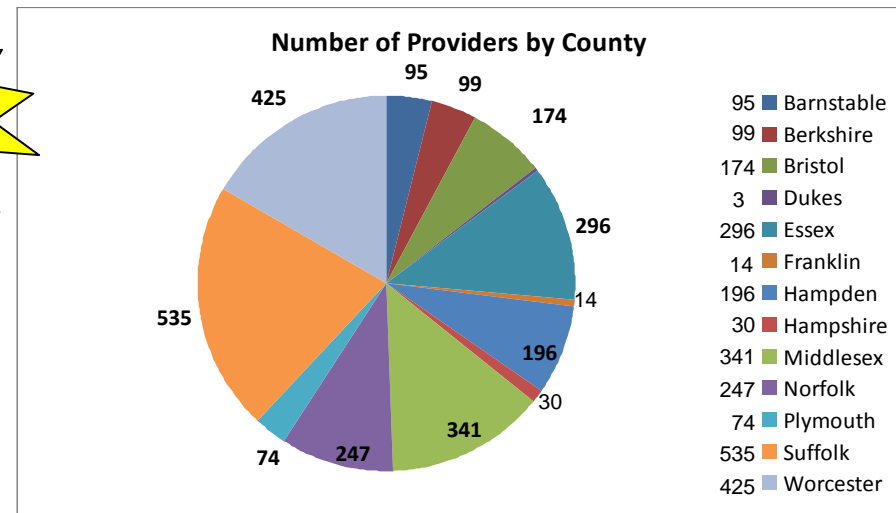
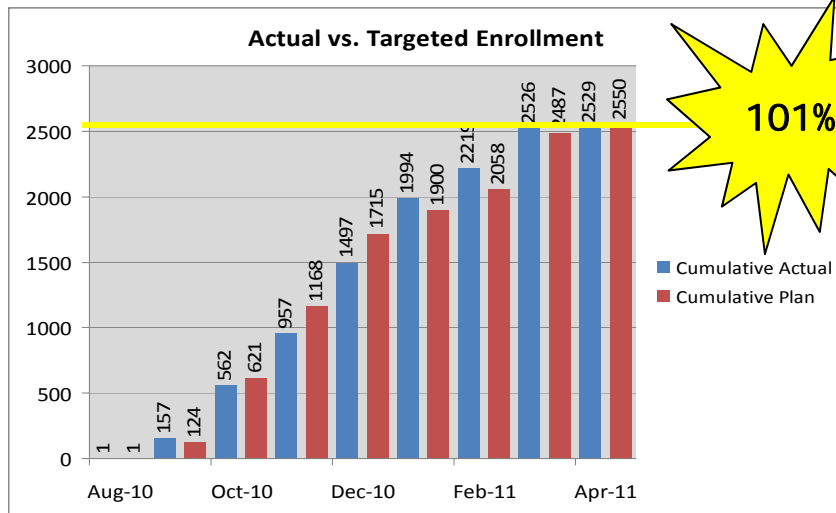
Kelli McLaney
Clinical Relationship Manager
MeHI

mclaney@masstech.org

617-371-3999 x209

Regional Extension Center Enrollment Update

2525 PPCPs as of June 17, 2011 (2600 Total Providers)



Private Practice 1-10 - Provider/practice who does not receive any support or guidance from a managed care contracting network and make decisions independent of those organizations.

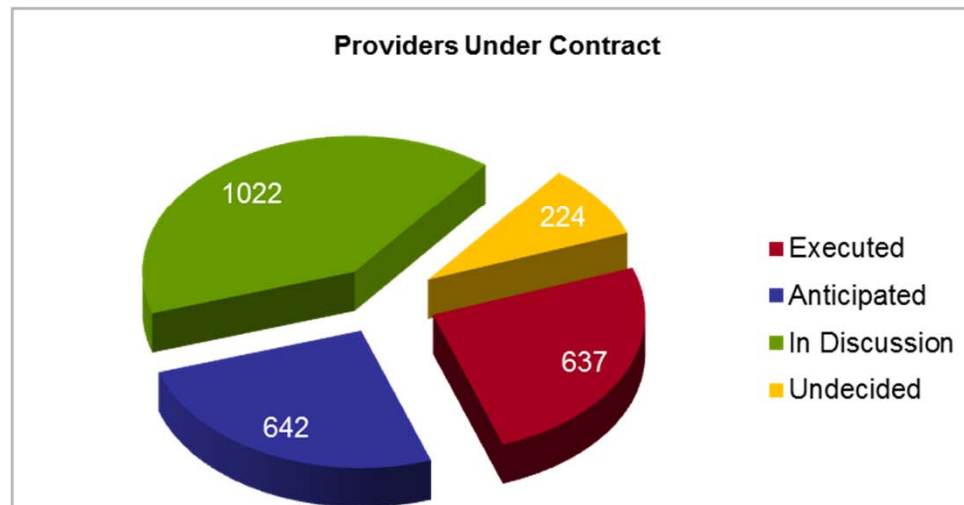
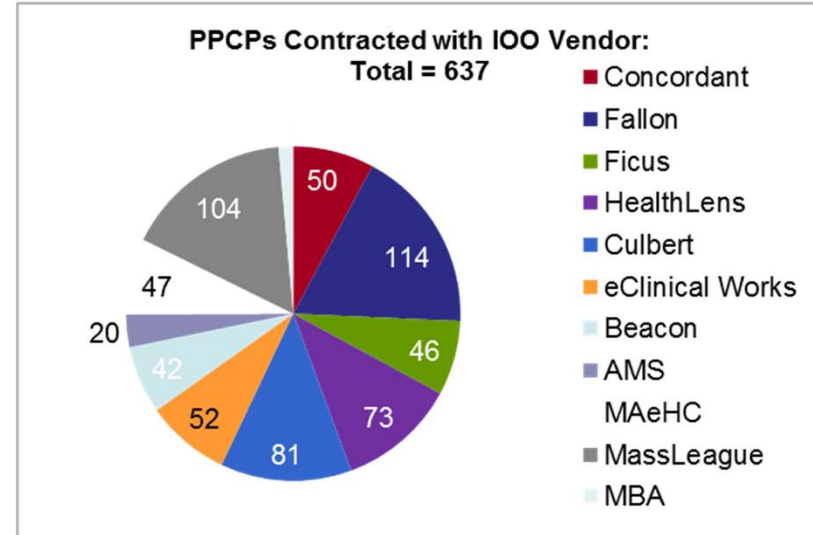
Practice Consortium - Practice that is part of an integrated delivery system, such as an Independent Physician Association or Physician Hospital Organization, and as such enrolls as part of that larger organization.

Community Health Centers (CHC) - Community-based and patient-directed organizations that serve populations with limited access to health care.

Public Hospitals - Hospitals that meet at least three of the following five criteria: 1) affiliated with a medical school; 2) referral center for specialty services not available at CAHs; 3) not-for-profit; 4) Medicaid patients represent at least 10% of cases; 5) community benefits at least 5% of net operating revenues

Regional Extension Center IOO Contract Update

637 PPCPs Contracted with an IOO as of June 17, 2011



100% of IOOs are actively working on contracts

IOO Payment Process

Milestones	Basic Services 1 (No EHR)	Basic Services 2 (EHR)
Execution of IOO Contract	\$1000	\$1000
EHR Go-Live	\$2000	-----
Meaningful Use	\$1500	\$1500
Total:	\$4500	\$2500

Provider Type	Payments
Priority Primary Care Provider (PPCP)	From MeHI to IOO
Specialist	From Specialist to IOO

Current Status of MeHI

Regional Extension Center

- Working with providers to ensure they are contracting with an IOO
- Collaborating with Mass Health and HIE to coordinate offerings and information to providers
- Educating providers on Meaningful Use

Mass Health/Medicaid

- Hired Medicaid director
- Bringing on 15 additional employees
- Working with Mass Health to get SMHP and IAP approved
- Anticipating August attestation

HIE(Health Information Exchange)

- Kick off HIT/HIE Advisory(statewide multi stake holder governance)
- Facilitating working discussions with MDPH including creating and distributing MISS document
- HIE Challenge Grants

Marketing Update

- Marketing Campaign
 - MeHI has engaged the services of SolomonMcCown& to develop a marketing campaign that will be kicked off in September
 - Plan will increase the awareness of MeHI throughout the state, ensuring that we are speaking to all our audiences and community partners
- MeHI Website Redesign
 - MeHI has engaged the services of KSV|Boston to redesign the website
 - Will include social media capabilities, such as Communities of Practice and blogs
 - User's profile will determine to what information and services they will have access



Physician Health IT Advisory Group

- Positively influence adoption of EHRs and HIT
- Physicians from across the state
- Passionate, early adopters of HIT
- Focus on small practices



Physician Health IT Advisory Group Subcommittees

- **GOOD-e: Guide for Organizing Optimal Data Entry and Extraction**
 - Develop a guide to help physicians achieve Meaningful Use
- **POWER: Paperless Office and Workflow Experienced Redesign**
 - Help physicians and office staff move from paper-based systems to paperless technology
- **VET: Vendor Evaluation Tips**
 - Develop a list of questions and criteria for physicians to consider when evaluating EHR systems

Coming soon.....
Specialty Subcommittee



Physician Health IT Advisory Group Future Topics

- Develop enhancements to the REC Member Portal
- FAQ's to be answered by Advisory Group members
- “Ask a Doctor” program
- Blogs written by Advisory Group members
-and more!



Meaningful Use Vanguard Program





Paperless
systems

Integration
into patient
care

Electronic
data
exchange

Advanced
EHR
applications

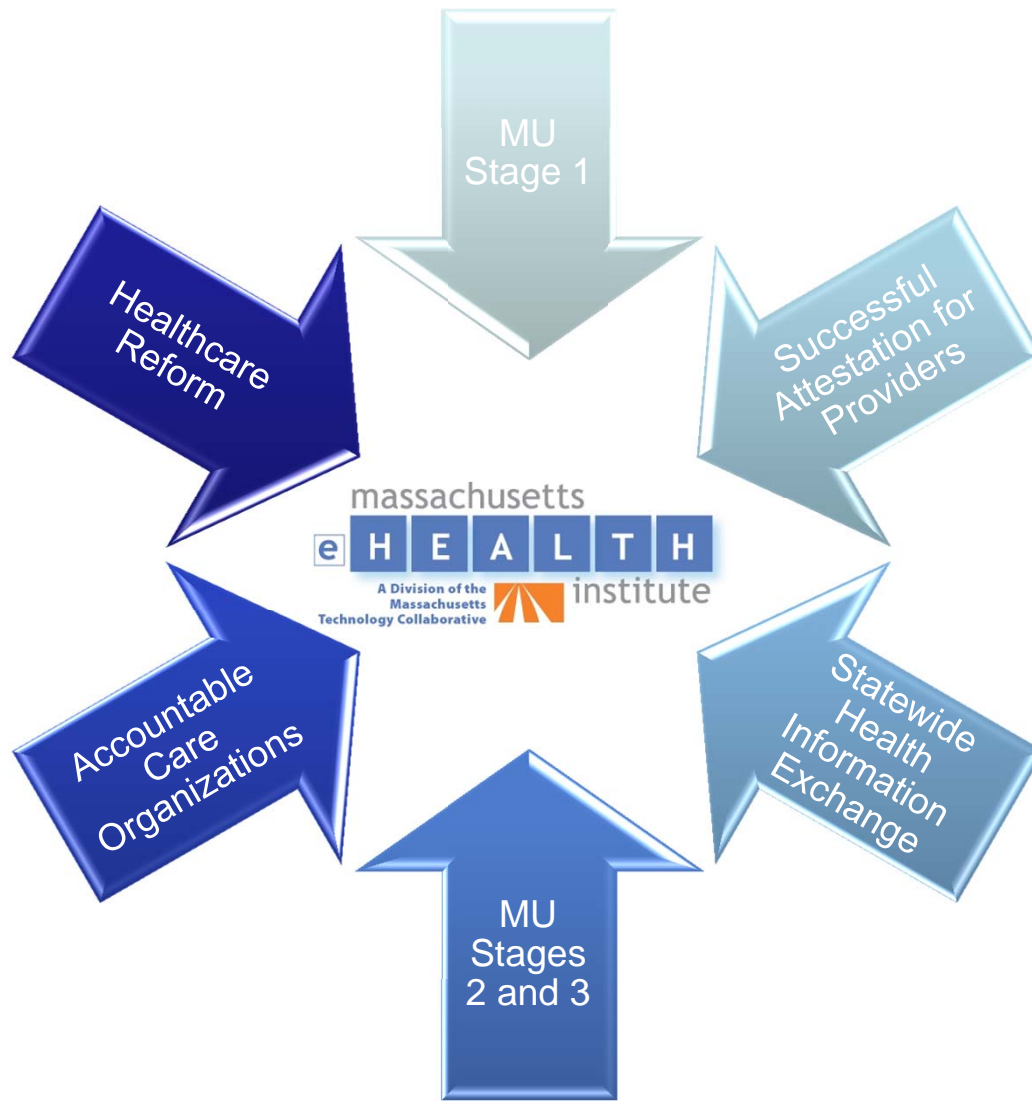
**Does this describe your practice?
You may be a *MASS MUVer!***

Being a *MASS MUV* has its benefits!



- ✓ Be recognized as a leader
- ✓ Access online community of EHR leaders
- ✓ Be an advisor on testing of new tools and materials
- ✓ Give feedback on meaningful use

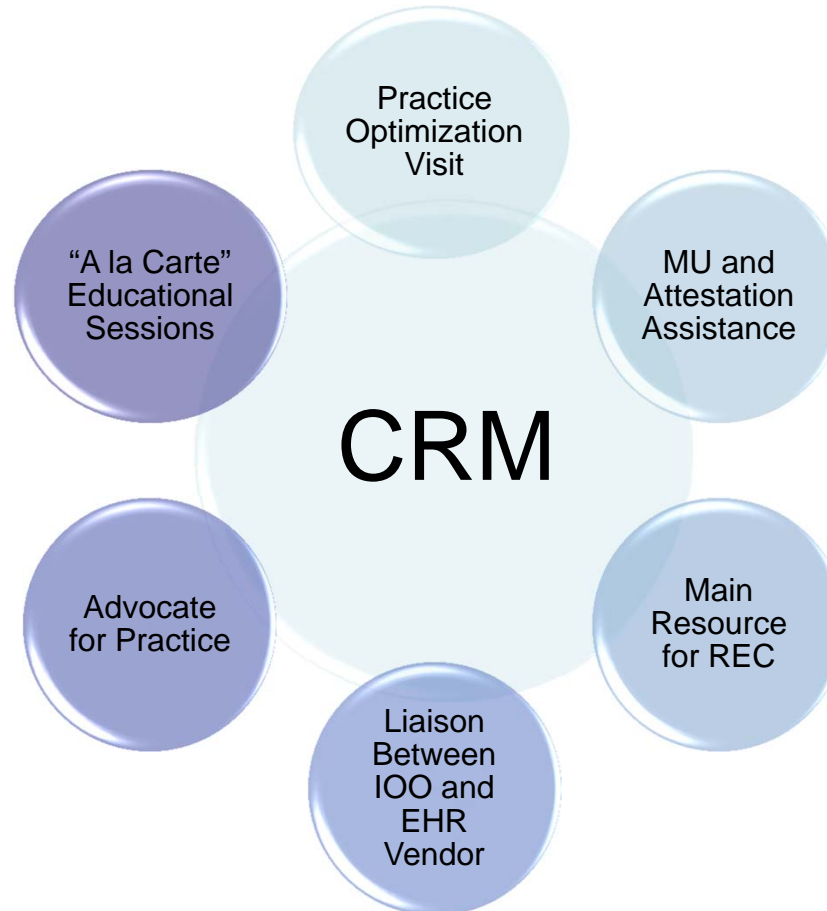
The Next Few Years at the REC



Services and Benefits for REC Members

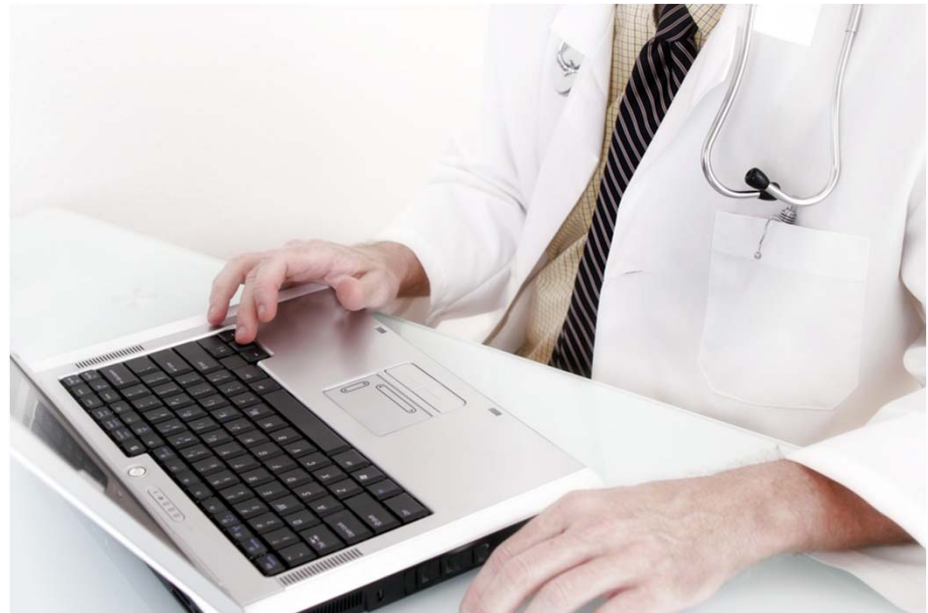
- Dedicated CRM Support
- Practice Optimization Visit
- Ongoing Vendor and IOO Discounts
- Vetted and Pre-Negotiated Contracts
- Communities of Practice
- Education and Training
- HIE Assistance
- Privacy and Security
- Free Attendance to MeHI Regional Meetings and Educational Summits
- Universal Calendar of Events
- Updates and Newly Released information on HIE, ACO's, PCMHI, REC, etc.
- Access to MUVer Program
- Access to CME Courses
- Medical Malpractice Discounts
- "A la Carte" Services Offered at a Discount

Dedicated Clinical Relationship Manager Support

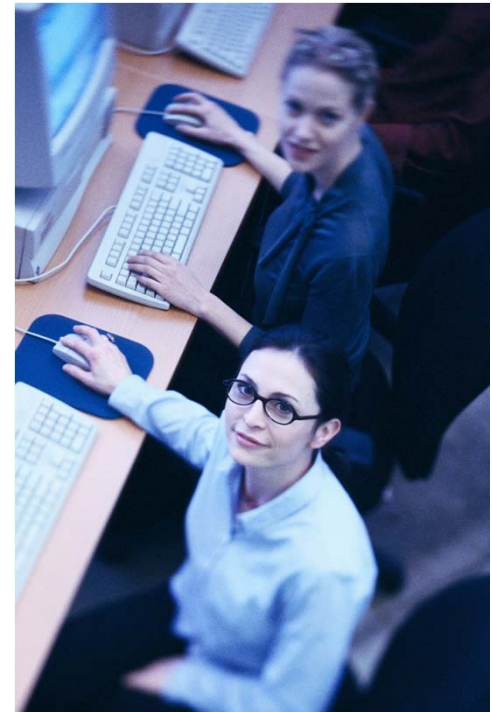


Communities of Practice (CoPs)

- Access to thousands of your peers
- Ability to network, meet, blog and discuss topics of relevance
- Forum to share best practices and exchange of ideas
- CoPs will be organized by:
 - IOO
 - Specialty
 - EHR Vendor
 - Organization Type
 - Live status of HER
 - Geography
 - Others??



- Ongoing Educational Sessions:
 - Meaningful Use (all stages)
 - HIE
 - Medicaid/Medicare/CMS
 - Certification
 - Attestation
- Regional Meetings and Educational Summits
- Privacy and Security Tips of the Week
- Blogs on Meaningful Use
- “Ask A Doc” Program
- Universal Calendar of events: One-Stop Shopping



Broadening REC Membership

- All Types of Care Providers
 - Primary Care Physicians
 - Specialists
 - Physician Assistants
 - Nurse Practitioners
 - Behavioral Health
 - Long Term and Post Acute Care
 - Home Care
 - Social Workers
 - Chiropractors
 - Dentists
 - Critical Access Hospitals

- Membership Opportunities for Other Organizations
 - Associations
 - Professional Societies
 - Affiliated Organizations
 - Vendors
 - Others??



Clinical Relationship Manager Contact Information

Bethany Gilboard

Director of Health Technologies
 Education & Outreach Coordinator
 617-371-3999 x201

gilboard@masstech.org

Berkshire, Essex and Middlesex counties

Kelli McLaney

Clinical Relationship Manager
 617-371-3999 x209

mclaney@masstech.org

*Suffolk county and all
 Community Health Centers*

Heather Hedlund, RHIA

Clinical Relationship Manager
 617-371-3999 x234

hedlund@masstech.org

*Barnstable, Bristol, Dukes, Norfolk,
 Plymouth and Nantucket counties*

Jim Brennan

Clinical Relationship Manager
 617-371-3999 x240

brennan@masstech.org

*Franklin, Hampden, Hampshire
 Middlesex and Worcester counties*

